



INTRODUCING

FLAWLESS SOLUTION FOR YOUR BIOCHEMISTRY WORKLOAD

BONAVERA^{CHEM} 200



Long Lasting Consistency

Precision & Accuracy

Powerful Backup

Ease of Use

Economy

FULLY AUTOMATED BIOCHEMISTRY ANALYZER

SALIENT FEATURES

Fully Automated, Discrete, Random Access Biochemistry Analyzer

Throughput Up to 200 Test Per Hour with STAT facility

On Board Laundry as well as On Board Cooling Facilities

Advance User-Friendly Operating System

Long Lasting Durable Optical System using IFCOS

Integrated Barcoded Reagent System



Reagent & Sampling Compartment

Equipped with **Onboard** cooling facility

- 40** Reagent Position using dedicated bottle types Smooth
- 40** sample position which can accommodate all types of cups, Primary Tubes, Blood Collection Tubes (Clot Activator)



Multifunctional Probe for Reagent / Sample

Internally & Externally **Polished** to resist carryover

Specially designed **waterfall washing** system

Equipped with vertical collision protection & Auto depth adjustment



Homogenous Mixing

Specially designed Telfon Coated Mixture with standardized step procedure for uniform mixing

Smooth Coating prevents water dropping & Cross Contamination.

Reaction Area & Optical System

44 Semi Permanent & Reusable **Pyrex** Cuvettes which can run for **>1500** Tests

Reaction Volume from **150 μ l** to **350 μ l**

Cuvette washing by On Board Laundry facility using 2 Step 6 Stop Washing

Cuvette Integrity Check at all wavelengths before the analysis

Reaction Area with unique **Air Incubation** system to maintain the Temperature of **37° \pm 0.1° C**

Integrated Fully Closed Optical System with 8 Short Bandwidth Interference filters.

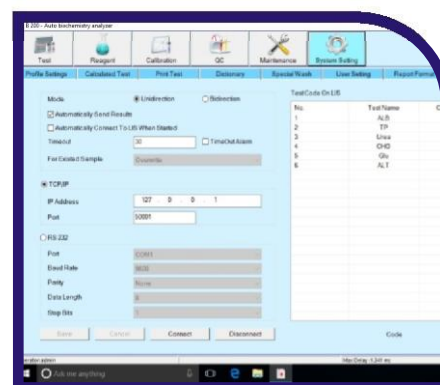


Advance Operating System

Easy to Use Window Base operating System

On Line Reaction & Calibration Curve

Reagent Inventory management System



Better Usability

Easy Lamp Assembly Changing Facility

Separate Power switch for refrigeration compartment



Sample Unit

Sample Tray	- 40 Sample Positions
Sample Tube	- Micro cup & test tube, blood collection tube can also be used
Sample Volume Optional	- 2-30µl, step by 0.1µl Sample Barcode -

Reagent Unit

Reagent Tray	- 40 reagent positions with constant temperature 2°C-14°C
Reagent Volume	- 20 - 300µl, step by 1µl
Reagent Needle	- Reagent volume detection, Collision protection

Operating System

Operating System	- Windows 7, Windows 8, Windows 10
Data Processing	- Automatic Calibration, Blank deduction, Dirty cuvette memory, Editable, reference ranges, Customized sample dilution, Panel test.....
Report Printings	- 6 formats optional TCP/IP network interfacing

Optical System

Light Source	- Halogen Lamp
Wavelength	- 340nm, 405nm, 450nm, 505nm, 546nm, 578nm 630nm, 700nm
Absorbance Range	- 0-4
Resolution	- 0.0001 Abs

Working Condition

Power Supply	- AC 110/220V +10% 50/60 Hz 650W Online UPS (230V) with isolated transformer 2kva
Dimension	- 870 x 690 x 740 mm (LxWxH)
Weight	- 80 kgs

READY TO USE SYSTEM

PACK REAGENTS

ALBUMIN
 ALP
 AMYLASE
 ASO TURBI
 BILIRUBIN (TOTAL & DIRECT)
 BILIRUBIN (TOTAL)
 BILIRUBIN (DIRECT)
 CALCIUM
 CHOLESTEROL
 CK-NAC
 CREATININE ENZYMATIC
 CRP TURBI
 GLUCOSE
 HBA1C
 HDL DIRECT
 PHOSPHORUS
 LDH
 LDL DIRECT
 MAGNESIUM
 RF TURBI
 SGOT
 SGPT
 TOTAL PROTEIN
 TRIGLYCERIDES
 UREA UV
 URIC ACID
 GAMMA GT
 CONTROL & CALIBRATORS