

# H560

## 5 Part Diff Hematology Analyzer



Ensures high accuracy with Tri-angle Laser Flowcytometry



36 Parameters Enhanced patient care



Supports geriatric and paediatric samples

Making Automation Affordable  
for labs Everywhere

# H 560

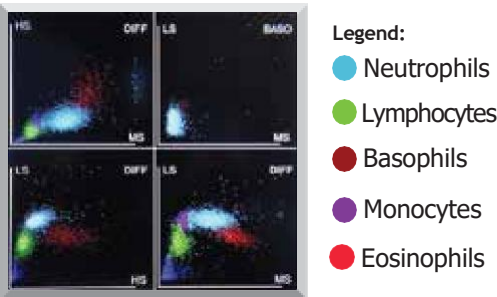
## 5 Part Diff Hemetology Analyzer

To offer value driven diagnosis for enhanced patient care, Erba H560 now comes to you with upgraded software. Several parameters have been introduced to CBC, such as clinical markers to differentiate iron deficiency, beta thalassemia in the preliminary diagnosis of diseases, besides NLR, NRBC and CWBC.

### KEY FEATURES

#### WBC Diff- world best technology

- Ensure accurate and precision
- Intensity of light scattered from semiconductor laser beam on the blood cells reflects cell size and intra cellular density
- Low angle scatter shows cell size, while the middle and high angle display intracellular information (nucleus and cytoplasmic content). Data thus captured plots 4 2D scattergrams
- Three reagent system for cost-effective operations (DIL, LYSE 1, LYSE 2 and cleaner)
- Independent WBC / Baso channel uses special hemolytic agent that extracts Basophils

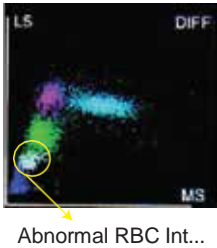


#### Convenient

- 10.4" large coloured LCD touchscreen with graphic icons
- Single page view of full report
- ADDM - Unique **A**uto **D**iluent **D**ispensing **M**echanism
- RIMS – **R**eal time **I**nventory **M**anagement **S**ystem with RFID

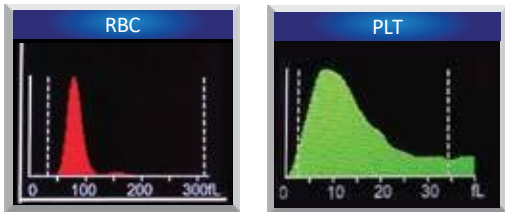
#### 36 Parameters including NLR, NRBC, CWBC, Mentzer index and RDW I

- P-LCR, P-LCC, PDW-SD & PDW-CV aids in differential diagnosis of cases with abnormal platelet counts supports clinical investigation
- RDW-SD, RDW-CV & MCV aids in screening for causes of anemia
- NLR: Novel prognostic marker for predicting short and long-term mortality in patients with COVID-19, cancer, sepsis, CVD, and post-operative complications. An NLR >3 is indicative of disease severity
- NRBC - To rule out Leukemia, anemia or spleen disorder
- CWBC - To obtain accurate WBC count for better clinical treatment.
- Mentzer index and RDW I Screening indices for IDA &  $\beta$ -Thal
- Flagging to identify p.vivax cases of malaria



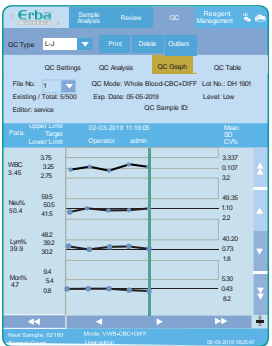
#### RBC / Platelet electrical impedance

- Electrical impedance measures change in electrical resistance produced by a blood cell suspended in conductive diluent as it passes through an aperture



#### Precision and Accuracy

- Excellent short and long-term precision within 2%
- Highly accurate results correlating with microscopic examination and clinical findings
- Specific flagging for microscopic slide review of clinically relevant parameters



#### Assured Quality with NABL compliance

- Lab mean
- Traceability of controls and calibrator runs
- Traceability of consumable lots

#### Advanced Software

- Provision to include microscopic investigations such as bands segment, blast, etc. in the printed report
- Consolidated patient reports can be generated for customized parameters such as blood type, Rh blood group, ESR, reticulocyte, CRP along with other reportable parameters
- QR code scanner facilitates direct inputs of QC values

Microscopic Exam. Settings		
No.	Parameter Name	Code System
1	Neutrophilic segmented granulocyte	
2	Neutrophilic band granulocyte	
3	Lymphocyte	
4	Monocyte	
5	Eosinophil	
6	Basophil	
7	Plasmacyte	
8	Atypical Lymph	
9	Blast	

#### Only 15 $\mu$ L sample volume

- Just 15  $\mu$ L sample volume: All age groups
- Low blood sample volume

# Ordering Information

Product Code	Description	Pack size (ml)
166121	Erba H560 analyzer	-
121743	H 560 Dil	20,000
121744	H 560 Lyse 1	4 x 200
121745	H 560 Lyse2	3 x 500
121939	H clean	4 x 50