

BONAVERA Count **5R**

5 Part Differential
Hematology Analyzer



With
RETICULOCYTE

SALIENT FEATURES

- ▶ 28 Reportable & 6 RUO* Parameters including Retic_Abs, Retic% as well as IRF
- ▶ Flow Cytometry (FCM) and Multi Angle Scatter Separation (MASS) Technology
- ▶ Unique Resistant RBC Mode
- ▶ Throughput of 60 Sample / Hr.
- ▶ Storage of 2,00,000 Results with Histogram & Scattergrams

BONAVERA

Count 5R

- ▶ 28 Reportable & 6 RUO* Parameters with 2 Histograms & 2 Scattergrams
- ▶ Reticulocyte count with RETIC_ABS, Retic% & IRF
- ▶ Impedance method for RBC & PLT counting
- ▶ Combination of WIC & WOC methods for WBC Counting
- ▶ Cyanide Free Reagent for HGB measurement
- ▶ Throughput of 60 sample / Hour
- ▶ Storage of 2,00,000 results with histograms & scattergrams
- ▶ Supports Variety of External color printers
- ▶ Supports HIS/LIS & HL7 Protocols
- ▶ Compact size design





Laser Scatter

Multi - angle scatter separation technology (MASS)



Digital Sheath Flow Regulation

Use of only sheath flow reagent for WBC 5 Part
Chemical Dye free Technology



Separation System

Use of motor & syringes for separation
Ceramic Syringes & high precision motors



Electronics & Mechanical Components

Use of Best Quality Time Tested components and materials
that ensures trouble-free long-lasting performance



2D Grams

2D histograms for RBC & PLT
2D scattergrams for 5-part WBC differentials including
Eosinophil & neutrophils



Operation Interface

Simple touchscreen operations with user friendly icons
Guidance to operator through handy tool icons



Quality Control Solutions

QC programs with 4 options like L-J, X-R, X-B & X
Third Party QC solutions available

TECHNICAL SPECIFICATIONS

BONAVERA
Count 5R

Parameters

WBC, LYM%, MON%, NEU%, EOS%, BAS%, LYM#, MON#, NEU#, EOS#, BAS#, RBC, HGB, HCT, MCV, MCH, MCHC, RDW_CV, RDW_SD, PLT, MPV, PDW, PCT, P_LCR, P_LCC, RETIC%, RETIC_ABS, IRF

Research Parameters : ALY#, ALY%, LIC#, LIC%, NRBC#, NRBC%

2 Histograms for RBC and PLT

2 Scattergrams : 5-part differential scattergram

Eosinophils and Neutrophil scattergram

Principles of Operation

WBC/DIFF : Flow Cytometry, Semi-conductor laser light multi-dimensional cell classification

WBC Analysis : Optical and impedance measurement

RBC/PLT Analysis : Impedance method

HGB Test : Cyanide-free reagent colorimetry

Reagent

Diluent, Sheath, Detergent, Lyse

Sampling Modes

Whole Blood : 20µL | Pre-Diluted : 20µL

Throughput

Whole Blood : Up to 60 samples / Hr.

Pre-diluted : Up to 60 samples / Hr.

Data Storage

Up to 200,000 sample results with grams

Alarms

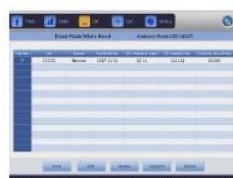
Error Messages



Main Page



Calibration Setting



QC Setting



System Maintenance

Linearity

Parameter	Linearity Range	Acceptable Limits	Correlation Coefficient R
WBC	$0 \times 10^9 / L \sim 10.0 \times 10^9 / L$	$\pm 0.5 \times 10^9 / L$	≥ 0.990
	$10.1 \times 10^9 / L \sim 100.0 \times 10^9 / L$	$\pm 5\%$	
RBC	$0.10 \times 10^{12} / L \sim 100 \times 10^{12} / L$	$\pm 0.05 \times 10^{12} / L$	≥ 0.990
	$1.01 \times 10^{12} / L \sim 8.00 \times 10^{12} / L$	$\pm 5\%$	
HGB	$0 \text{ g/L} \sim 70 \text{ g/L}$	$\pm 2 \text{ g/L}$	≥ 0.990
	$71 \text{ g/L} \sim 250 \text{ g/L}$	$\pm 2\%$	
PLT	$0 \times 10^9 / L \sim 100 \times 10^9 / L$	$\pm 10 \times 10^9 / L$	≥ 0.990
	$101 \times 10^9 / L \sim 1000 \times 10^9 / L$	$\pm 8\%$	

Display

10.4 inch with touch screen

Requirements

Voltage	: 110 - 220V (AC), 1 KVA Online UPS with Isolated Transformer
Temperature	: 15 - 30
Humidity	: 30 - 85%
Size	: L 490 mm x H 332 mm x W 459 mm
Weight	: 35 KG